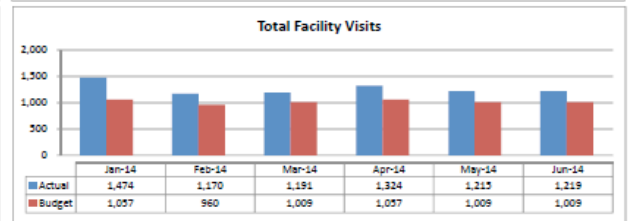
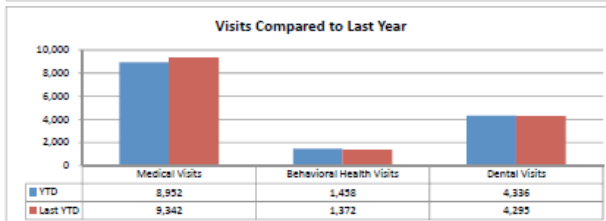
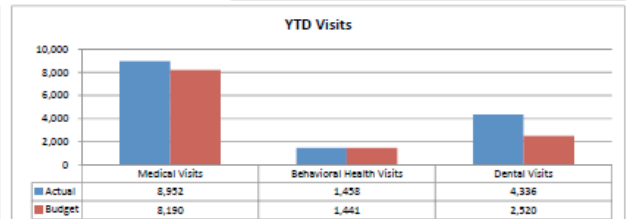
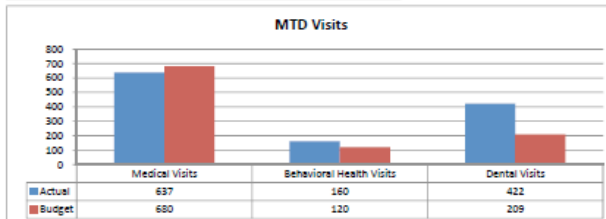
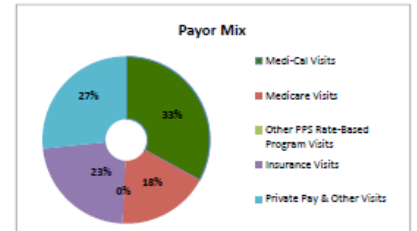
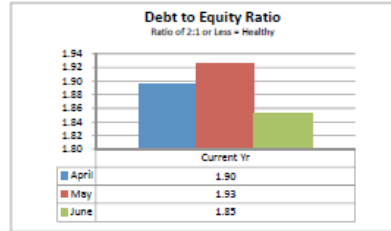
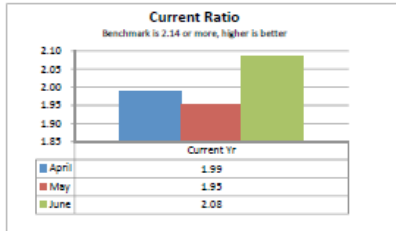
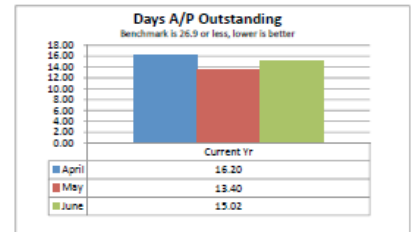
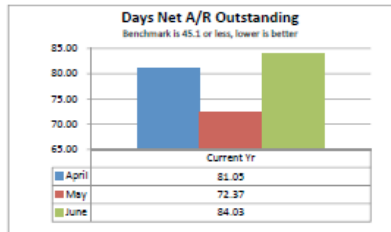
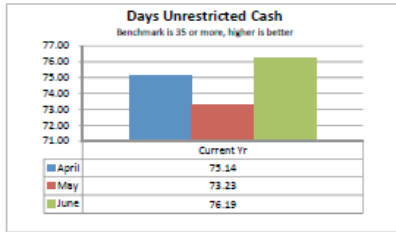
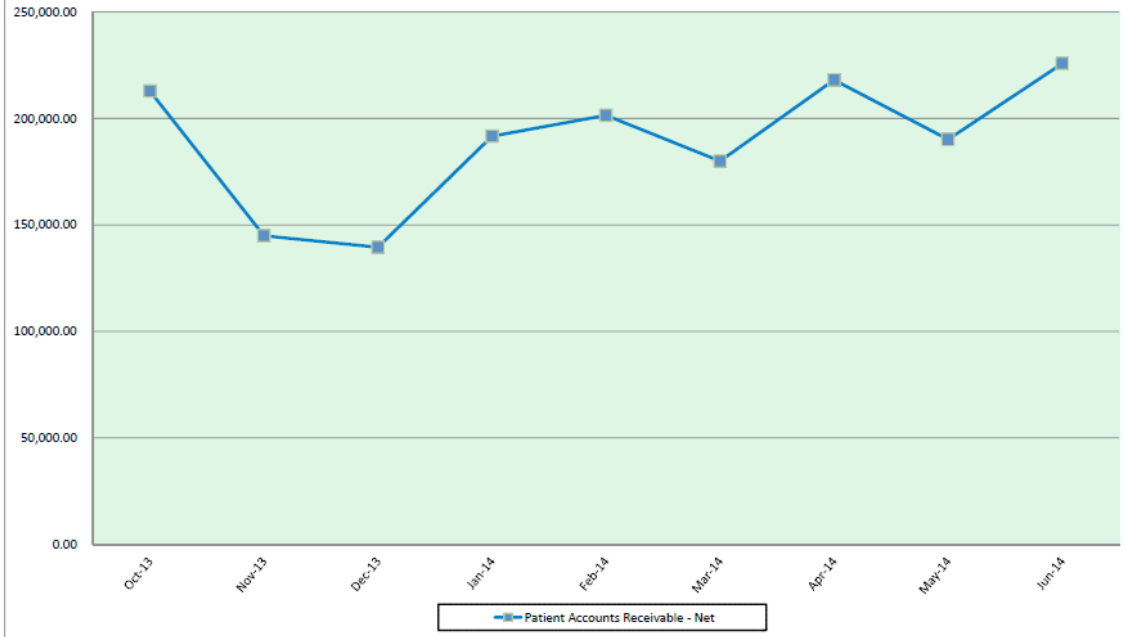


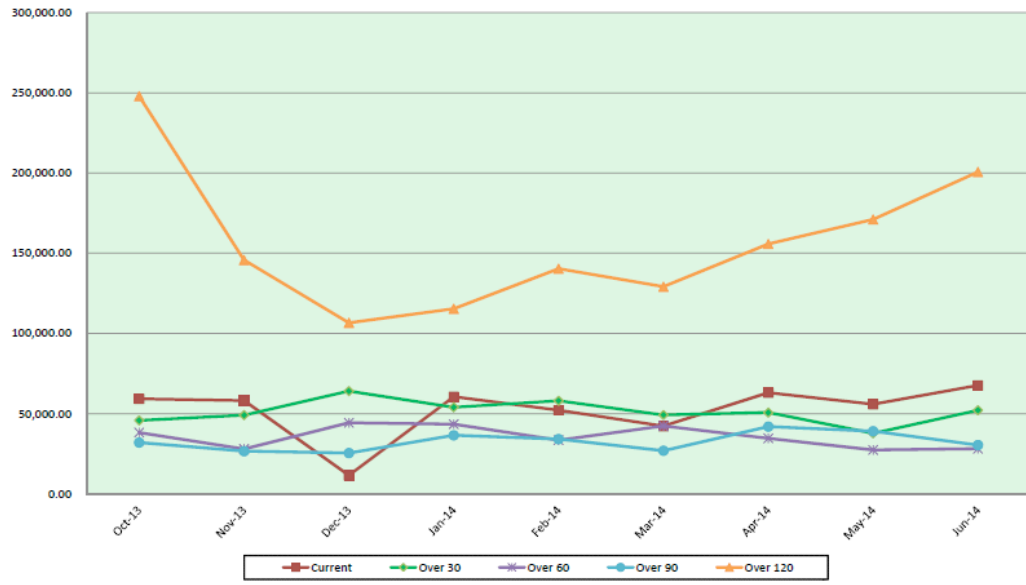
**ANDERSON VALLEY HEALTH CENTERS**  
**BOARD FINANCIAL SUMMARY**  
**JUNE 2014-PRELIMINARY**



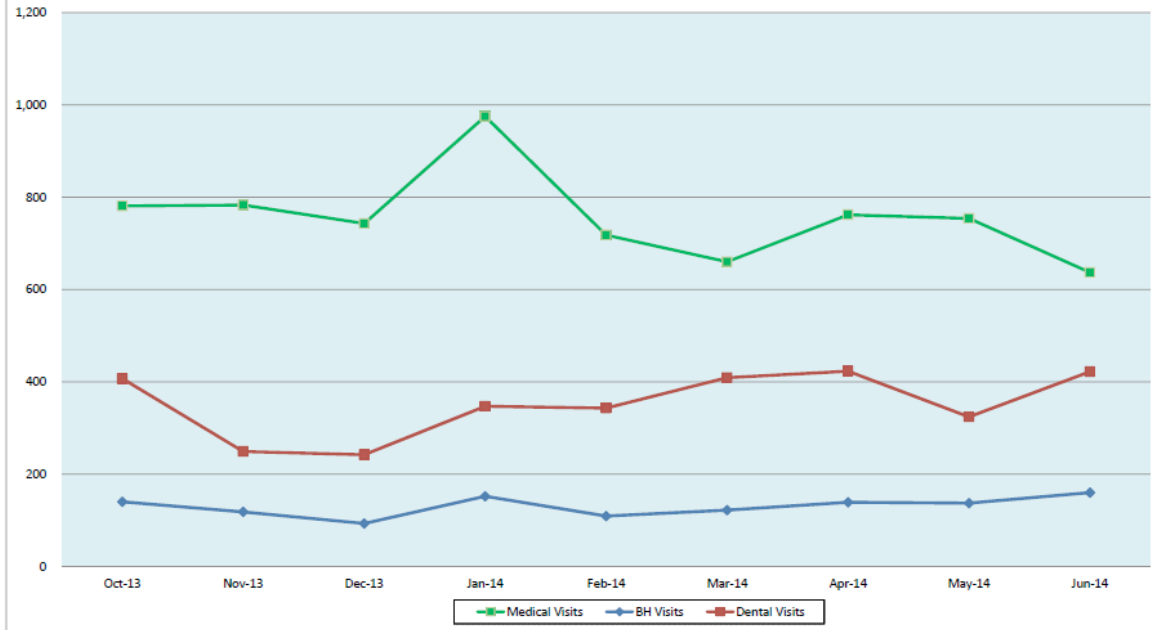
**ANDERSON VALLEY HEALTH CENTERS**  
ACCOUNTS RECEIVABLE TREND  
JUNE 2014



**ANDERSON VALLEY HEALTH CENTERS**  
**ACCOUNTS RECEIVABLE TREND - BY AGED PERIODS**  
 JUNE 2014



**ANDERSON VALLEY HEALTH CENTERS**  
VISITS BY DEPARTMENT  
JUNE 2014



Financial report BY DEPARTMENT  
P&L YTD as of June, 2014

4

\$(000)	Primary Care	Dental	Behavioral Health
Service Revenue - gross	830	436	126
Provision for BD, slides and other w/o's	-238	-148	-26
+ Grants	<u>671</u>	<u>300</u>	<u>28</u>
= Total Revenue	<b>1,263</b>	<b>588</b>	<b>128</b>
- Expense	<u>1,344</u>	<u>623</u>	<u>203</u>
= Net operating income	<b>-81</b>	<b>-35</b>	<b>-75</b>
+ Fund Raising	<b>42</b>	<b>26</b>	<b>6</b>
= Net Organizational income	<b>-39</b>	<b>-9</b>	<b>-69</b>